

The World's Oldest Chess Journal



BRITISH

Since 1881

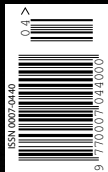
CHESS MAGAZINE

Volume 136



APRIL
2016

£5.50



TWO UNUSUAL
MOVES IN THE
OPENING FOR WHITE

**Don't laugh...
it may happen
to you!**

by IM Andrew Martin

VISIT WWW.BRITISHCHESSMAGAZINE.CO.UK

**SUBSCRIBE
& SAVE**

James PLASKETT ON THE ROAD TO LA RODA

STARRING
MARKUS RAGGER

The
Thirty
Nine **Steps**

**Black is OK
against both**

1d4 and 1e4!

by IM Shaun Taulbut

CHESS QUESTIONS
ANSWERED

**Scotch on
the rocks**

by IM Gary Lane

CAN YOU FIND THE CHECKMATE IN 25 MOVES?

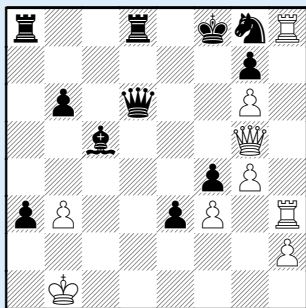
by Richard Guerrero

www.ajedrezespectacular.com

Based on the game...

Westler — Krejčík

Vienna 1913



White to play and mate in 25 moves

Solution on page 251.